

# SPECIFICATION

Customer : \_\_\_\_\_

Customer's Model No. : \_\_\_\_\_

Model No. :MB3XXX Series \_\_\_\_\_

Date: 2016.02.19 \_\_\_\_\_

Sample Serial No. : \_\_\_\_\_

Spec. Version & Revision Date:V01 2016.02.19

Received/Approved by

**CHAMPTEK**<sup>®</sup>

Web: <http://www.champtek.com>

Taiwan

E-mail: [sales@champtek.com](mailto:sales@champtek.com)

ChampTek Incorporated

.5F, No. 2, Alley 2, Shih-Wei,Lane,  
Chung Cheng Rd.

Hsin Tien District, New Taipei City 231,

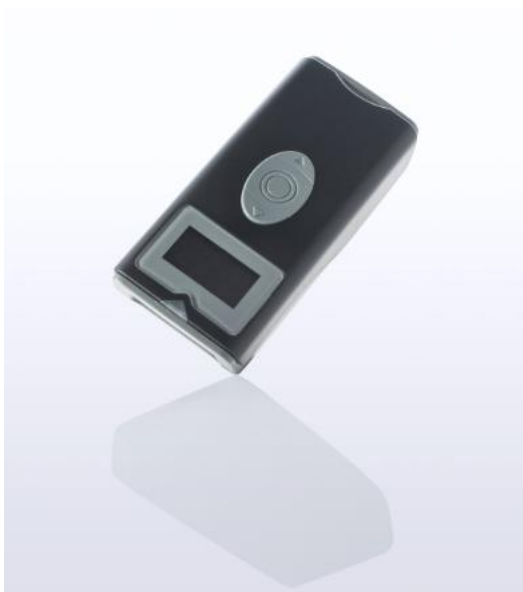
Tel: 886-2-22192385

Fax: 886-2-22192387

## Revision History

Version	Date	Context
V01	2016.02.19	Tony release

# MB300 series Wireless Pocket Scanner



## Technical Product Specification

System Architecture	
Micro Processor	32-bit
Operating Platform	Proprietary
Flash Memory	512 Kbyte program. 8 M bytes user data that can save over 100,000 items of 50 bytes barcode data.
RAM Memory	128 Kbytes
Display Size	0.96" OLED 128x64 dots Monochrome
Input Keys	3 buttons, include 1. scan and confirm trigger button, 2. upward scroll button , 3. downward scroll button
Indicator	1. LED x 1(White/Green/Blue/Red) 2. Beeper x 1 3. Vibration motor x 1
Environmental	
Operating Temp.	0°C to 50 °C
Storage Temp.	-20 °C to 70 °C
Power Source	
Battery	Lithium-Polymer (3.7V DC)
Battery Charging	via Micro USB connector (5V)
Physical Characteristics	
Dimensions	41.8mm x 89.9mm x 23.6mm ( W x D x H)
Weight	Designed to be approx. 70 g(With Battery & OLED Panel)
Available color	Black cover and dark gray bottom cases
Hanger	1 Hanger Hole
Protection	IP54 sealing protection
Drop Spec.	1.5m (5 feet)
Data Input	
Scanner possibilities	Options: by respective rollout schedule. One of the barcode scanners  (1) [MB300C] - CCD 1D Scanner Scan rate: Smart detect up to 500 scans/sec , Visible Red light 633nm Up to 140nm @ Code 39 ,PCS 90%(0.1mm) Ambient light,50,000 Lux (Max) @ Code 39, PCS 90%(20 mil) <b>All UPC/EAN/JAN, EAN128 Code, Code 39, Code 30 Full ASCII , Code32/Italian Pharmacy, Code 128, CODABAR/NW7, Interleave 25, Industrial 25, Matrix 25, Matrix 25, MSI.PLESSEY, Telepen, Code 93, Code 11, China Postage, Code 26, LCD25, GS1 DataBar Omnidirectional &amp; Stacked, GS1 DataBar Limited, GS1 DataBar Expanded &amp; Stacked</b>

<p>(2) [MB300i] - 2D imager scanner</p> <p>Up to 120 scans per second in linear emulation and 60 images per second in 2D area mode</p> <p>Visible Red light 633nm</p> <p>Up to 180nm @ Code 39 ,PCS 90%(0.127mm)</p> <p>Ambient light, 100,000 Lux Max (Sunlight)</p> <p>1D Symbologies:  <b>EAN/UPC, UCC/EAN128, ISBN, ISBT, Code 11, Code 39, Code 93/93i, Code 128, Interleaved, Matrix, Industrial, Standard 2 of 5, Codabar, MSI, Plessey, Telepen, Postal codes, GS1 DataBar</b></p> <p>2D Symbologies:  <b>Data Matrix, Data Matrix Inverse, PDF417, Maxicode, QR code, QR code Inverse, Aztec(&amp; Inverse), EAN.UCC composite, MicroQR code</b></p>	
<p>(3) [MB300L] - Laser 1D scanner</p> <p>Up to 104 scans per second nominal</p> <p>Visible laser diode, 650 nm</p> <p>Up to 160nm @ Code 39 ,PCS 90%(0.127mm)</p> <p>Ambient light, 100,000 Lux Max (Sunlight)</p> <p><b>All UPC/EAN/JAN, EAN128 Code, Code 39, Code 30 Full ASCII , Code32/Italian Pharmacy, Code 128, CODABAR/NW7, Interleave 25, Industrial 25, Matrix 25, Matrix 25, MSI.PLESSEY, Telepen, Code 93, Code 11, China Postage, Code 26, LCD25, GS1 DataBar Omnidirectional &amp; Stacked, GS1 DataBar Limited, GS1 DataBar Expanded &amp; Stacked</b></p>	
<b>Communication Interface</b>	
Wired	Micro USB V2.0 ( for Power charging only)
Wireless	Bluetooth 2.1+EDR+ SSP (Class 2)
<b>Functions</b>	
Standby Duration	Over 3 months
Scan per charge	[BT off] over 10,000 scans / [BT On] over 5,000 scans under normal operating conditions after battery full charged.
Low Battery Alert	Battery levels are indicated by the LED illuminating color
Data Handling	Able to be chosen as on-line (via BT ) or off-line (batch) mode.
Off-line Mode	Can save over 100,000 items of 50 bytes barcode data.
Indication combination	Can be configured as (1) Scan Review + LED indication (2) Vibration + LED indication (3) Beep + LED indication or (4) All indication Enable
Compatibility	Customers can easily develop AP on different OS.

Due to Champtek’s continuing product improvement programs, specifications and features are subjected to change without prior notices.