

## **KS64-Set Parameters**

### **Purpose**

The document is aimed to illustrate the procedure for upload and download the parameters between PC and slot reader by the utility, KS64.

### **Scope**

This document is applicable to MMR, MR300, MR800, MBR, BR300 and BR800 with RS-232, USB or PS/2 interface.

### **Requirements**

- Slot Reader + RS-232/USB/PS2 Cable
- PC + MS-Windows + RS-232 COM Port/USB Port/PS2 Port
- Utility: Setup\_KS64V3.46.11a\_C.exe
- 5V Adaptor (for RS-232 cable only)

### **Procedure**

-Connect RS-232/USB/PS2 cable on PC and slot reader.

(If the interface is RS-232 cable, connect adaptor on power jack on RS-232 cable.)

-Install the utility 'Setup\_KS64V3.46.11a\_C.exe'.

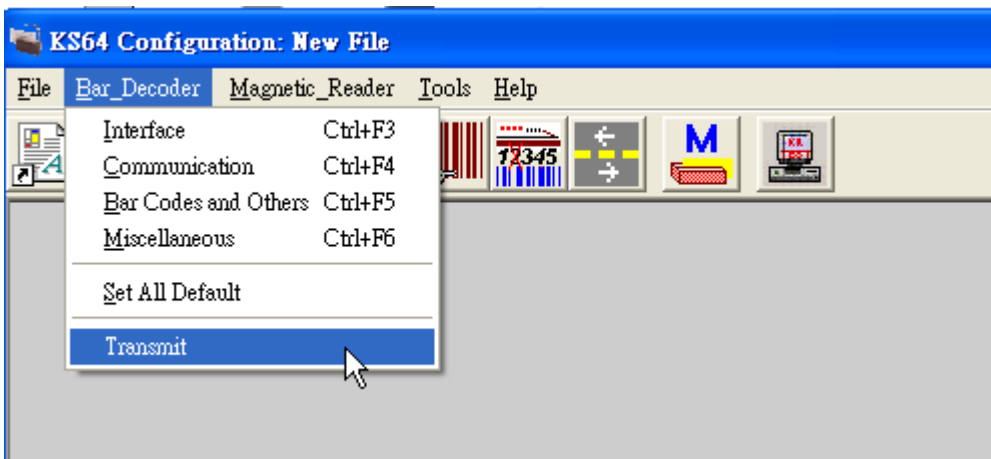
-After installation, execute the program 'KS64 Configuration'.



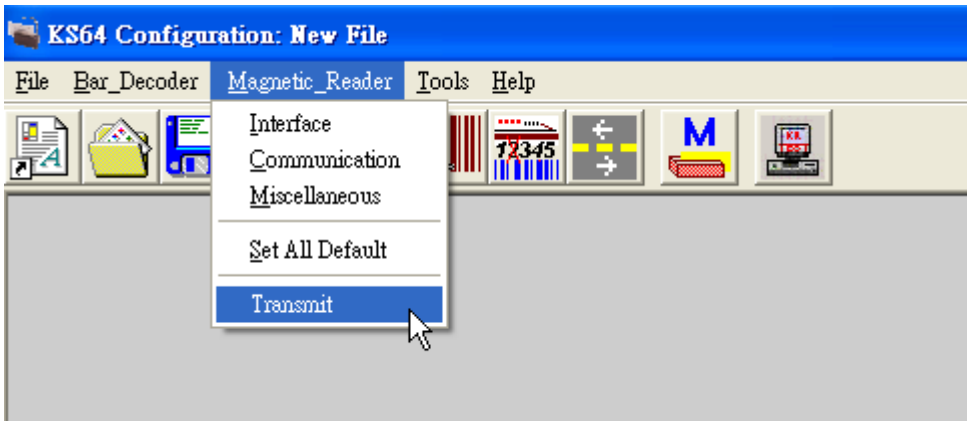
-The utility screen is as following.



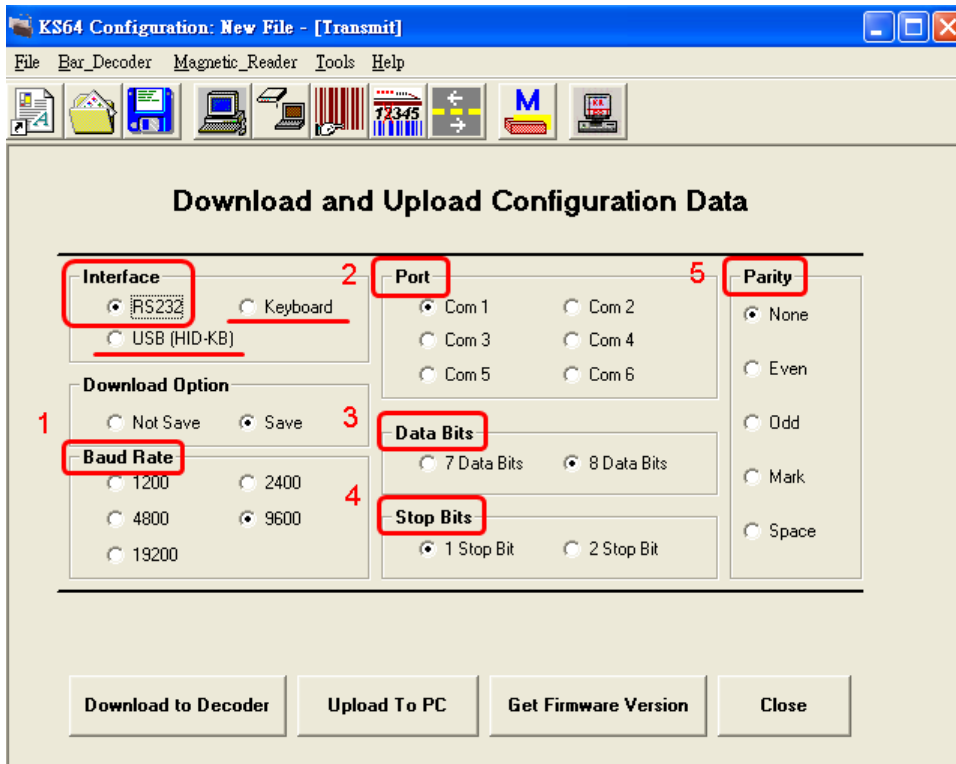
-For **barcode slot reader**, select 'Bar\_Decoder'. Click 'Tranmit'.



-For **magnetic card slot reader**, select 'Magnetic\_Reader'. Click 'Transmit'.



-This 'Transmit' page is to transmit all the parameters between PC and slot reader. The interface on this page should be selected corresponding to the cable plugged currently for parameter transmission.

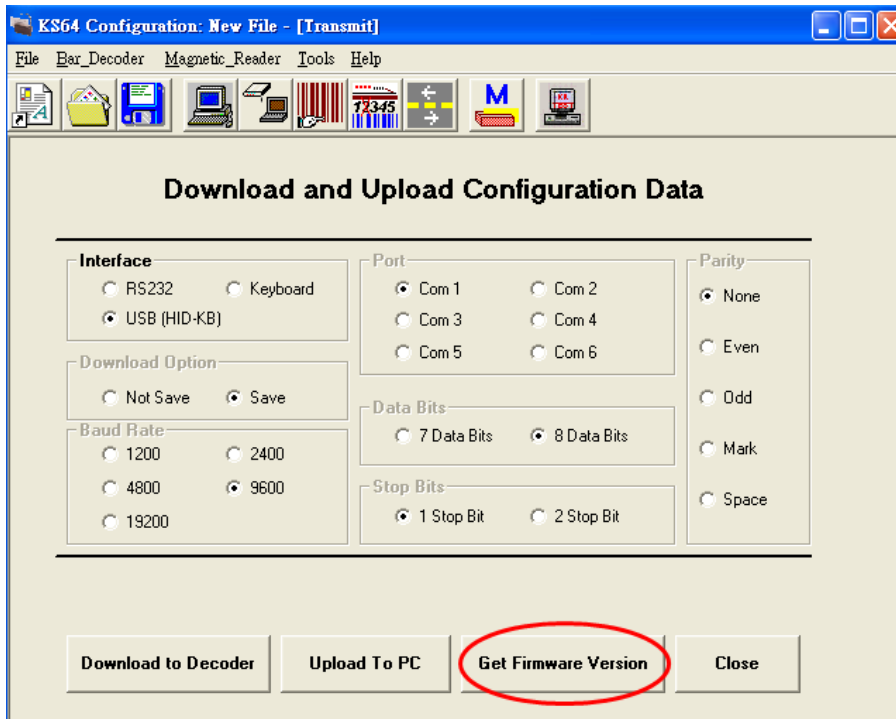


-For USB cable, select 'Interface: USB (HID-KB)'.  
 -For PS/2 cable, select 'Interface: Keyboard'.  
 -For RS-232 cable, select 'Interface: RS232' and point 1 ~ point 5 for RS-232 parameters.

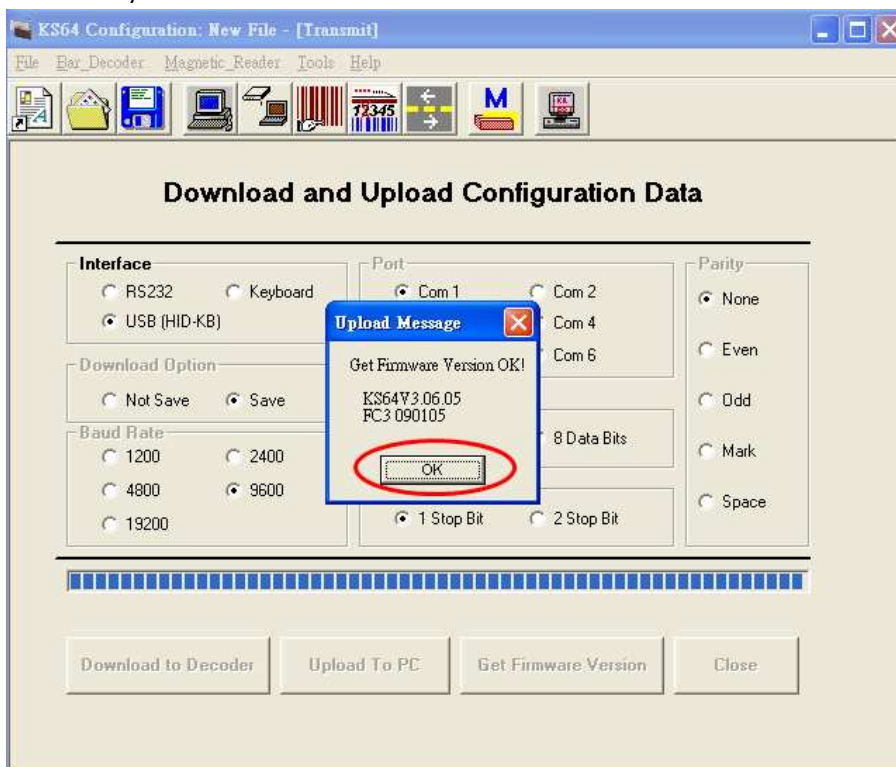
By default, the RS-232 parameters are as below.

- Baud Rate=9600
- Port (Select corresponding COM Port number)
- Data Bit=8 Data Bits
- Stop Bit=1 Stop Bit
- Parity=None

-Click on 'Get Firmware Version' to check the slot reader firmware.

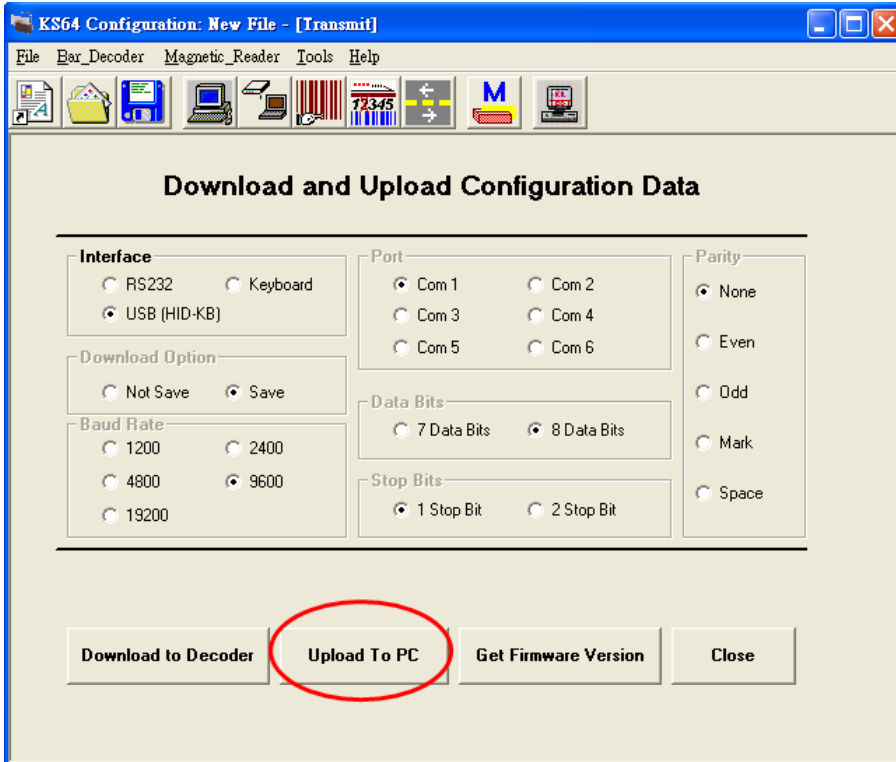


-If a message box shows up to show the firmware version, it means the slot reader is well-connected on PC and the communication between slot reader and PC is correctly.

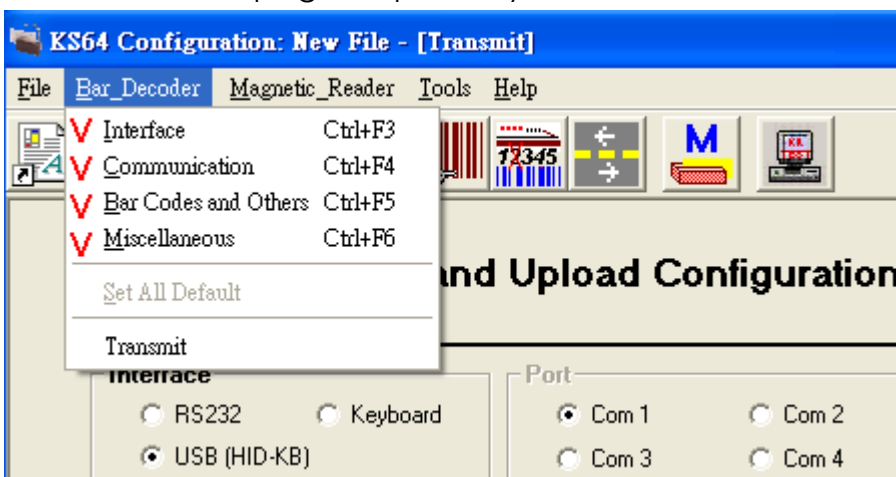


-Click 'OK' to close this message box.

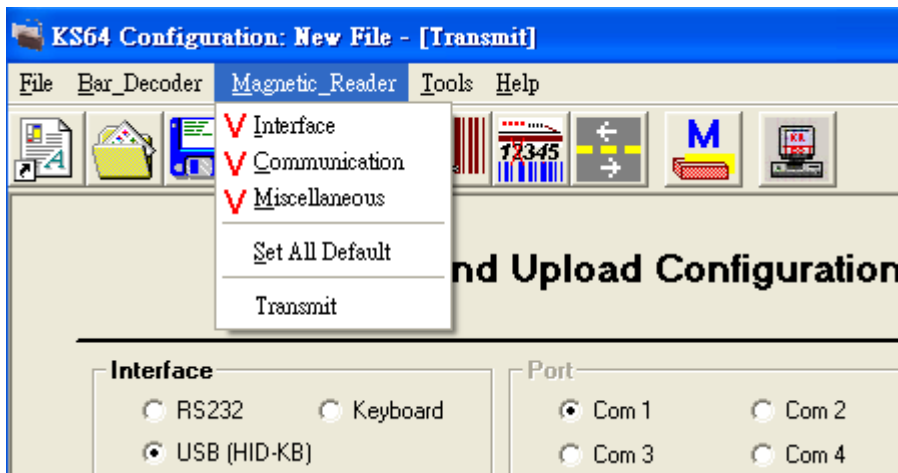
-The parameters shown on the utility is the default value. To configure the parameters in slot reader, click 'Upload to PC' to upload all the parameters from slot reader to PC. Afterwards, the parameters shown on the utility will be synchronized to the slot reader.



-For **barcode slot reader**, click on 'Bar\_Decoder' to configure the desired parameters in 'Interface', 'Communication', 'Bar Codes and Others' and 'Miscellaneous' pages separately.



-For **magnetic card slot reader**, click on 'Magnetic\_Reader' to configure the desired parameters in 'Interface', 'Communication' and 'Miscellaneous' pages separately.



-When all desired parameters are configured, go to 'Transmit' page and click on 'Download to Decoder' to download all the parameters from PC to slot reader. All the parameters will be saved in slot reader.

