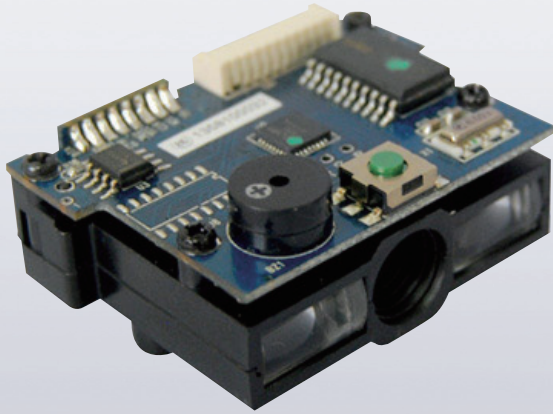
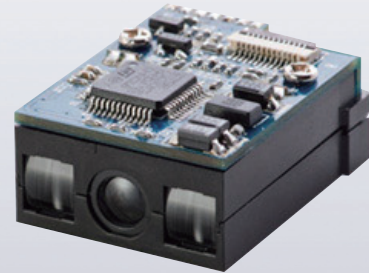


# CCD Bar Code Scanning Module

**CHAMPTEK**<sup>®</sup>  
We value your ID's



**MCR12**



**MCR14**

Specification	MCR12	MCR14
Light Source	632nm Red LED	632nm Red LED
Depth of Field	Up to 240mm@20mil / 0.5mm, PCS90%	Up to 500mm@20mil / 0.5mm, PCS90%
Scan Rate	100 scans per second+10%	Smart detection, up to 500 scans per second
Scan Patten	Horizontal - 45°	Horizontal - 45°
Resolution	5mil / 0.127mm@PCS90%	4mil / 0.1mm@PCS90%
Print contrast ratio	30%	30%
Indicator	Beep	Beep
Interface	PS2 / RS232 / USB	UART / USB(MCR14 only) RS232 / USB / Keyboard Wedge (MCR14 with Test board)
Dimensions(WxHxL)	44.15 x 20 x 31.95mm	20 x 11.5 x 25mm
Power	DC +5V +5%	DC +5V +5%

Symbologies

